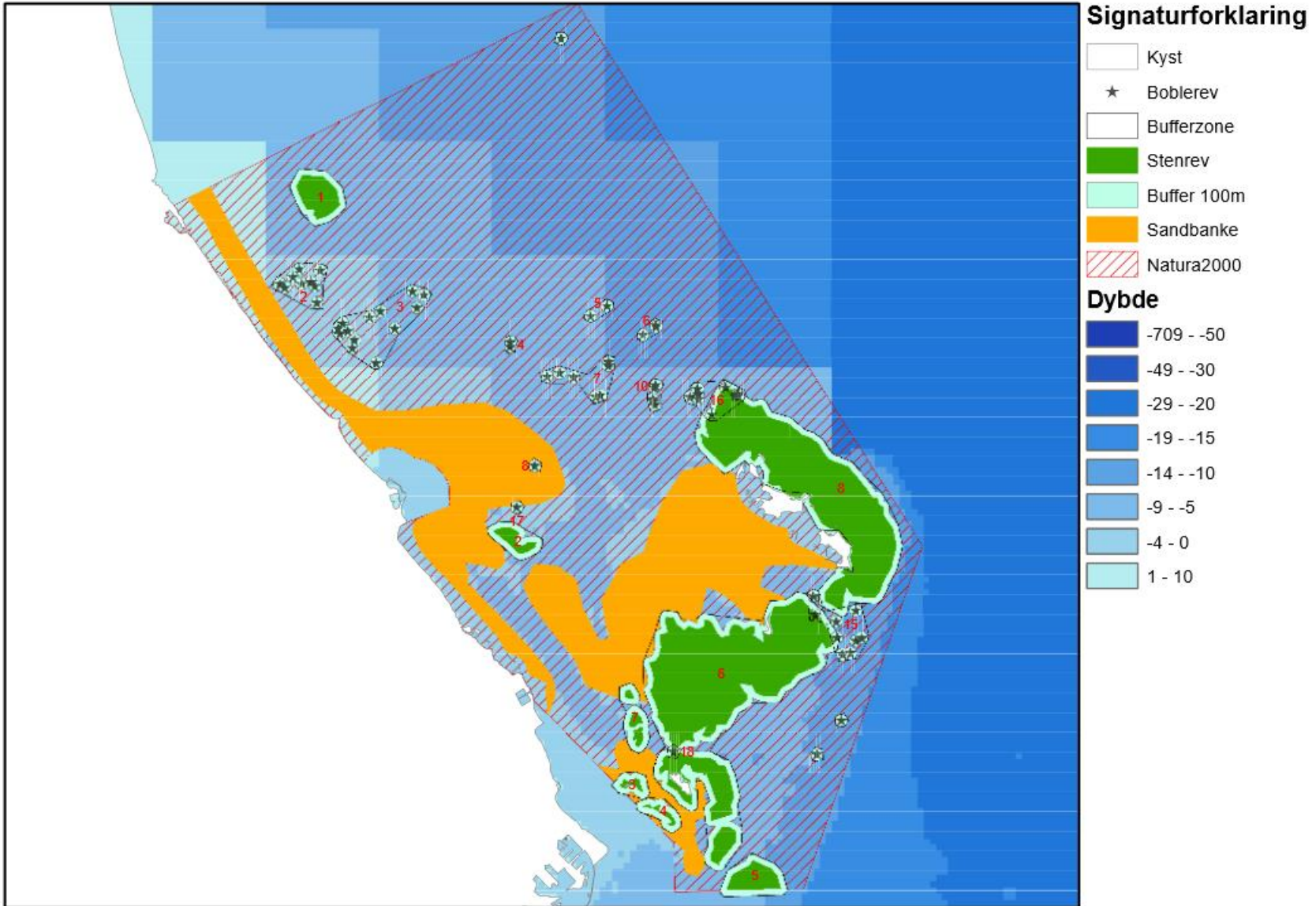
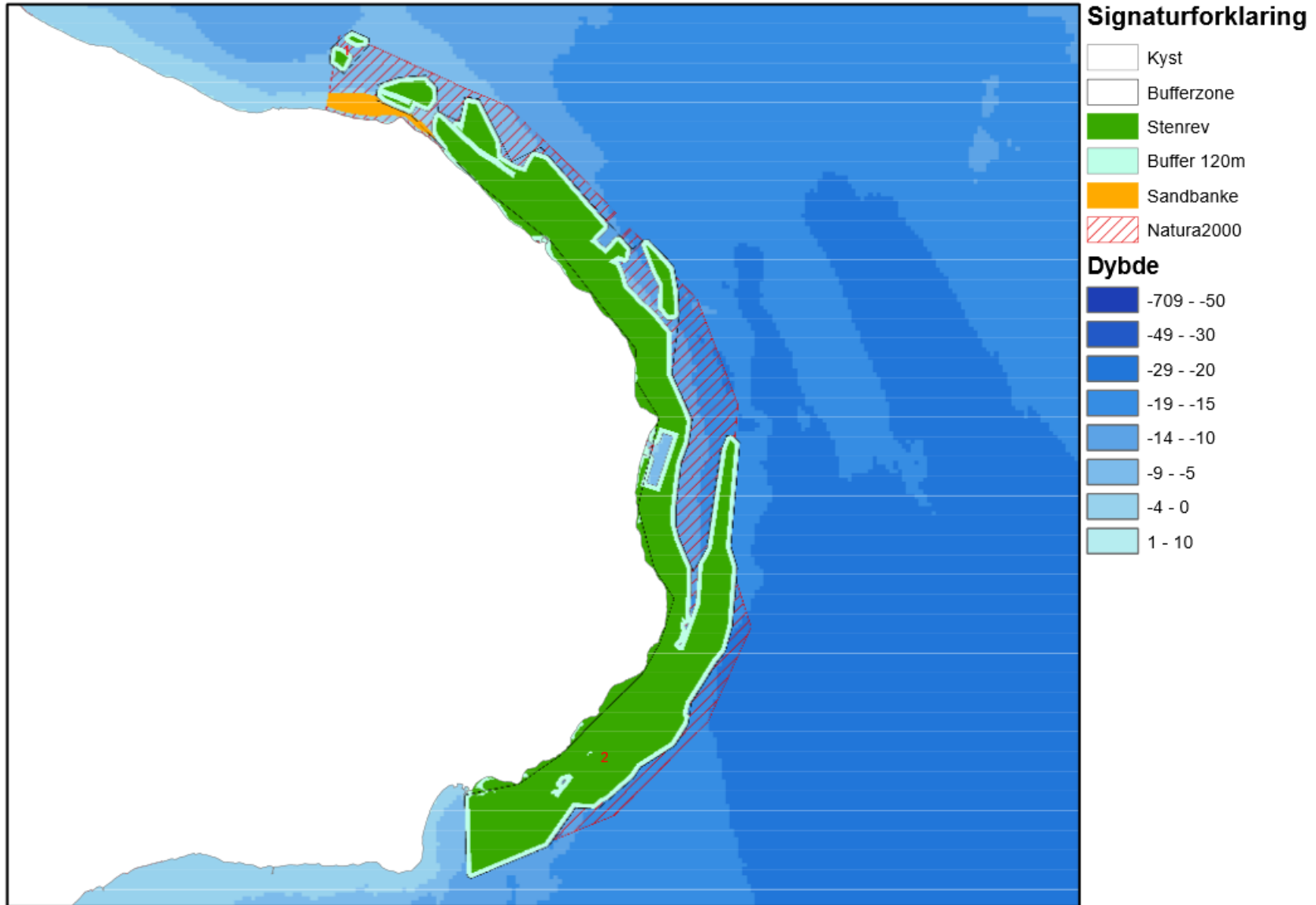


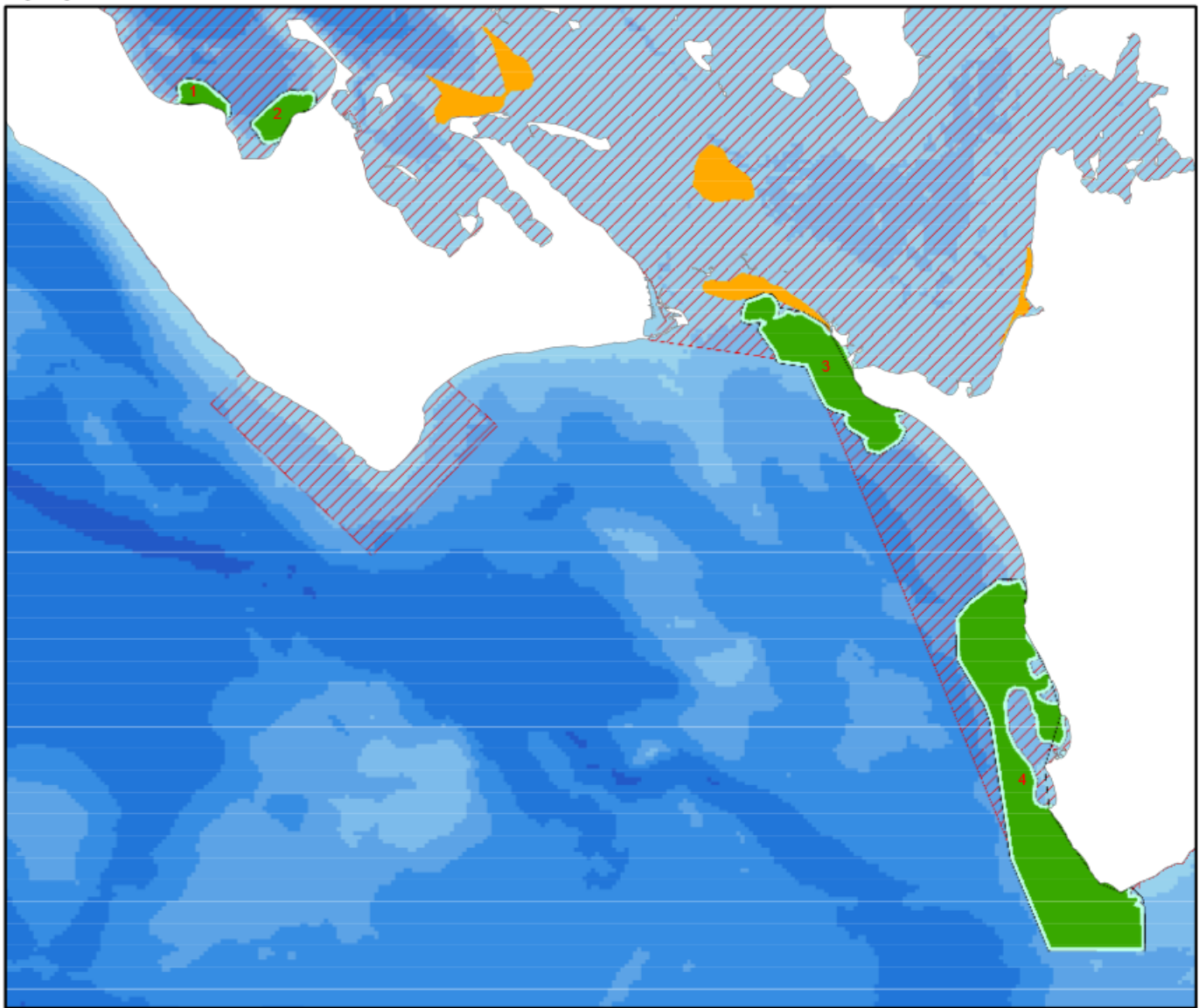
Hirsholmene



Stevns Rev



Sydfyn



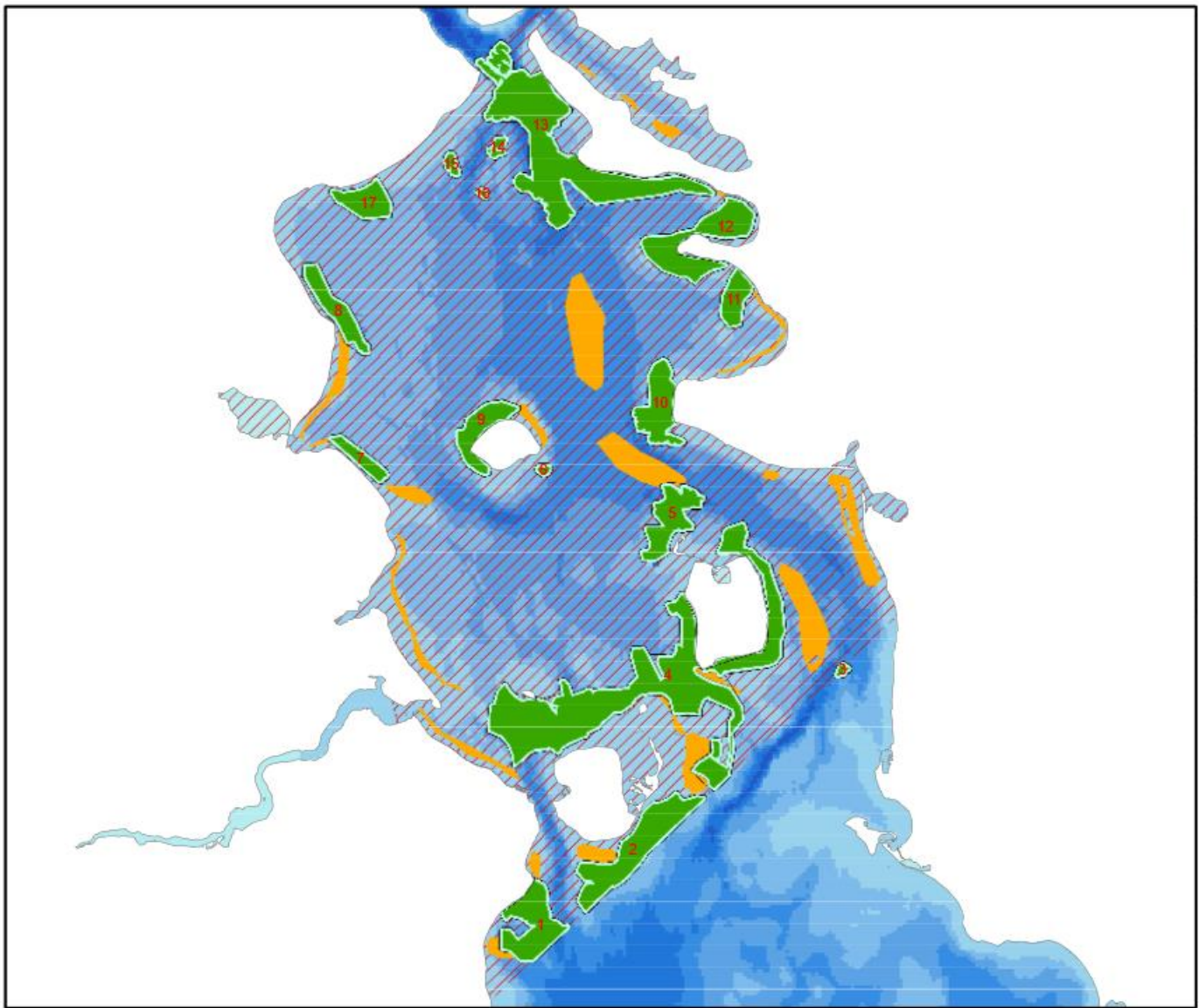
Signaturforklaring

- Kyst
- Bufferzone
- Stenrev
- Buffer 100m
- Sandbanke
- Natura2000

Dybde

- 709 - -50
- 49 - -30
- 29 - -20
- 19 - -15
- 14 - -10
- 9 - -5
- 4 - 0
- 1 - 10

Lillebælt



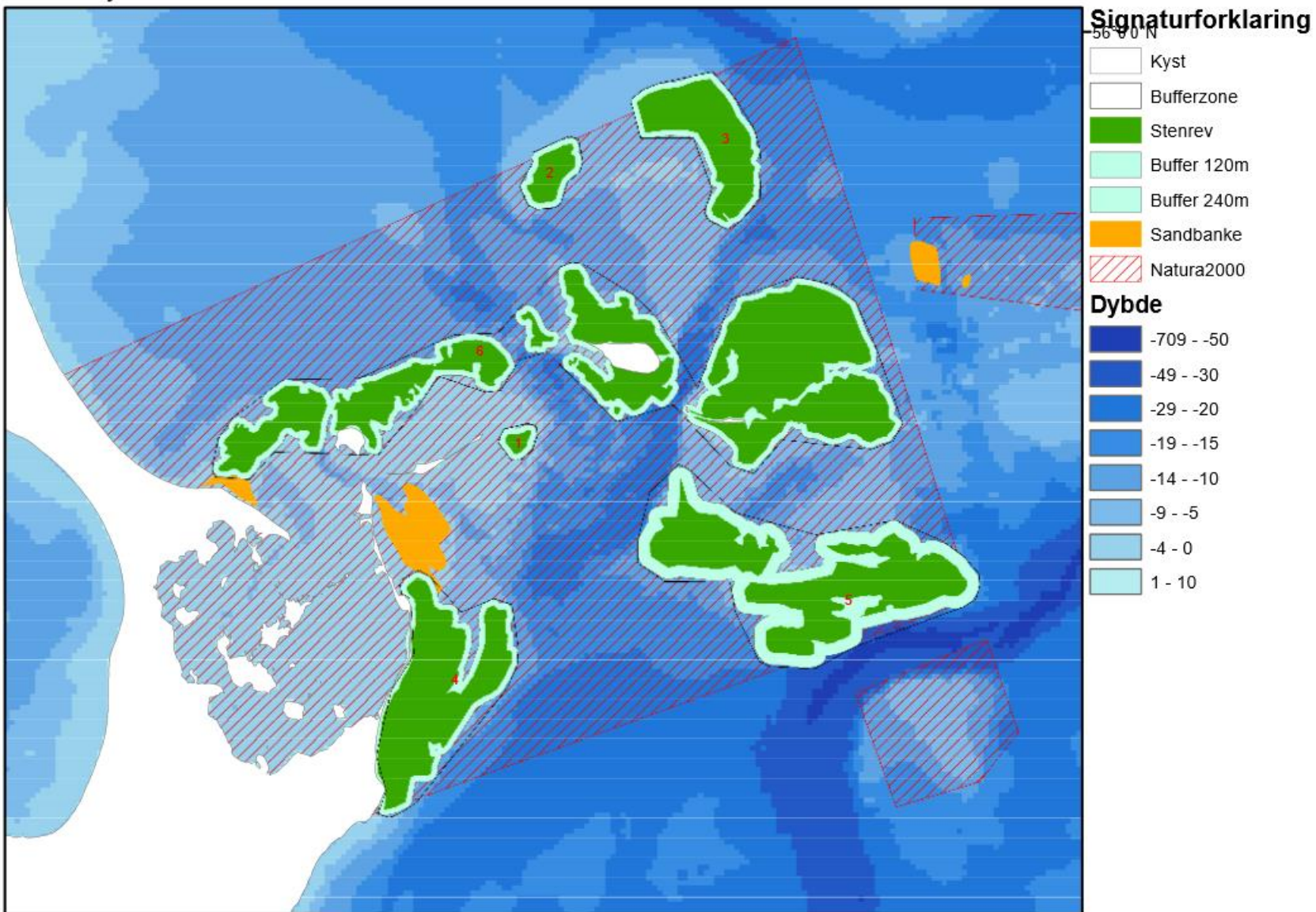
Signaturforklaring

- Kyst
- Bufferzone
- Stenrev
- Buffer 100m
- Sandbanke
- Natura2000

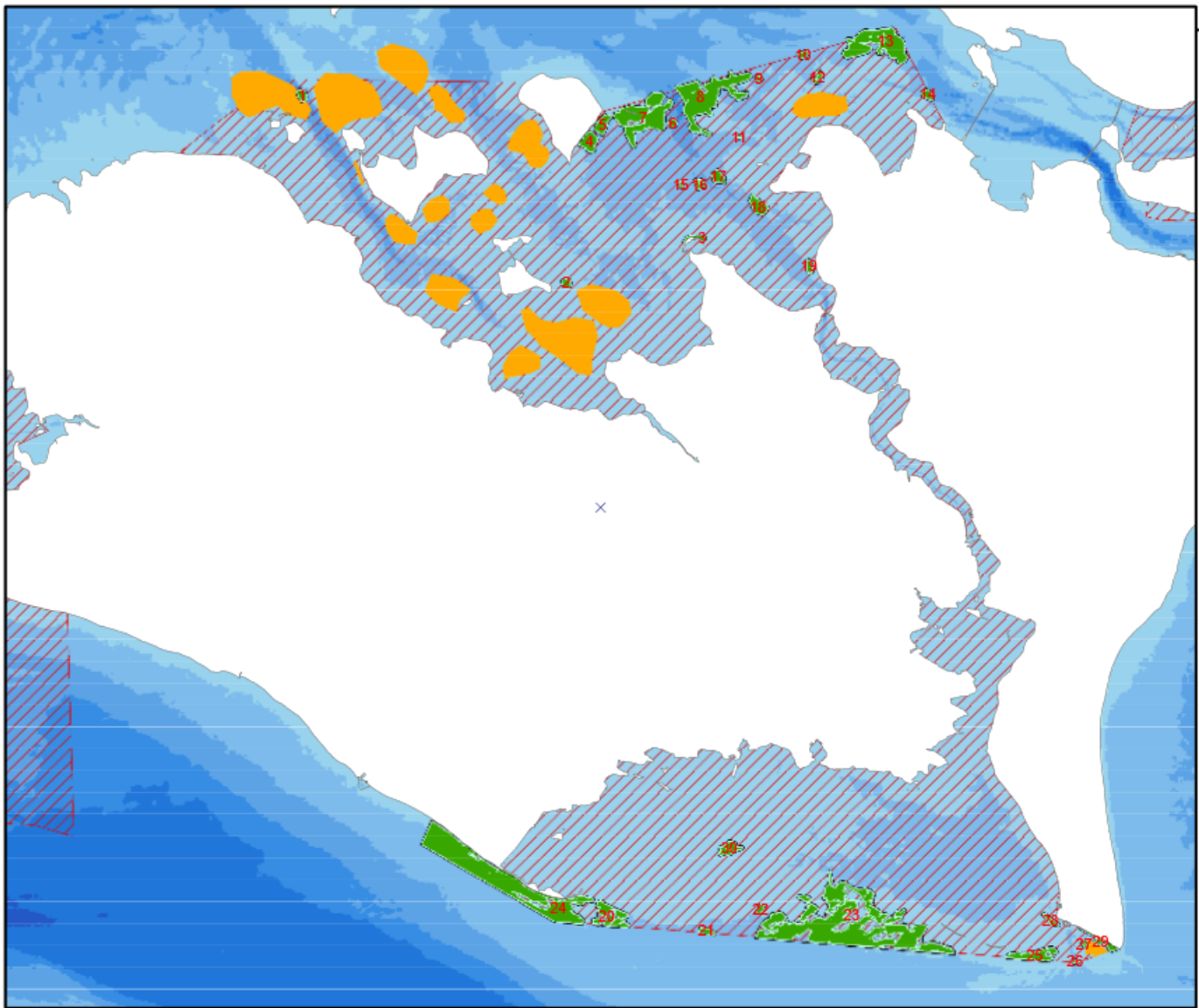
Dybde

- 709 - -50
- 49 - -30
- 29 - -20
- 19 - -15
- 14 - -10
- 9 - -5
- 4 - 0
- 1 - 10

Stavns Fjord



Smålandsfarvandet

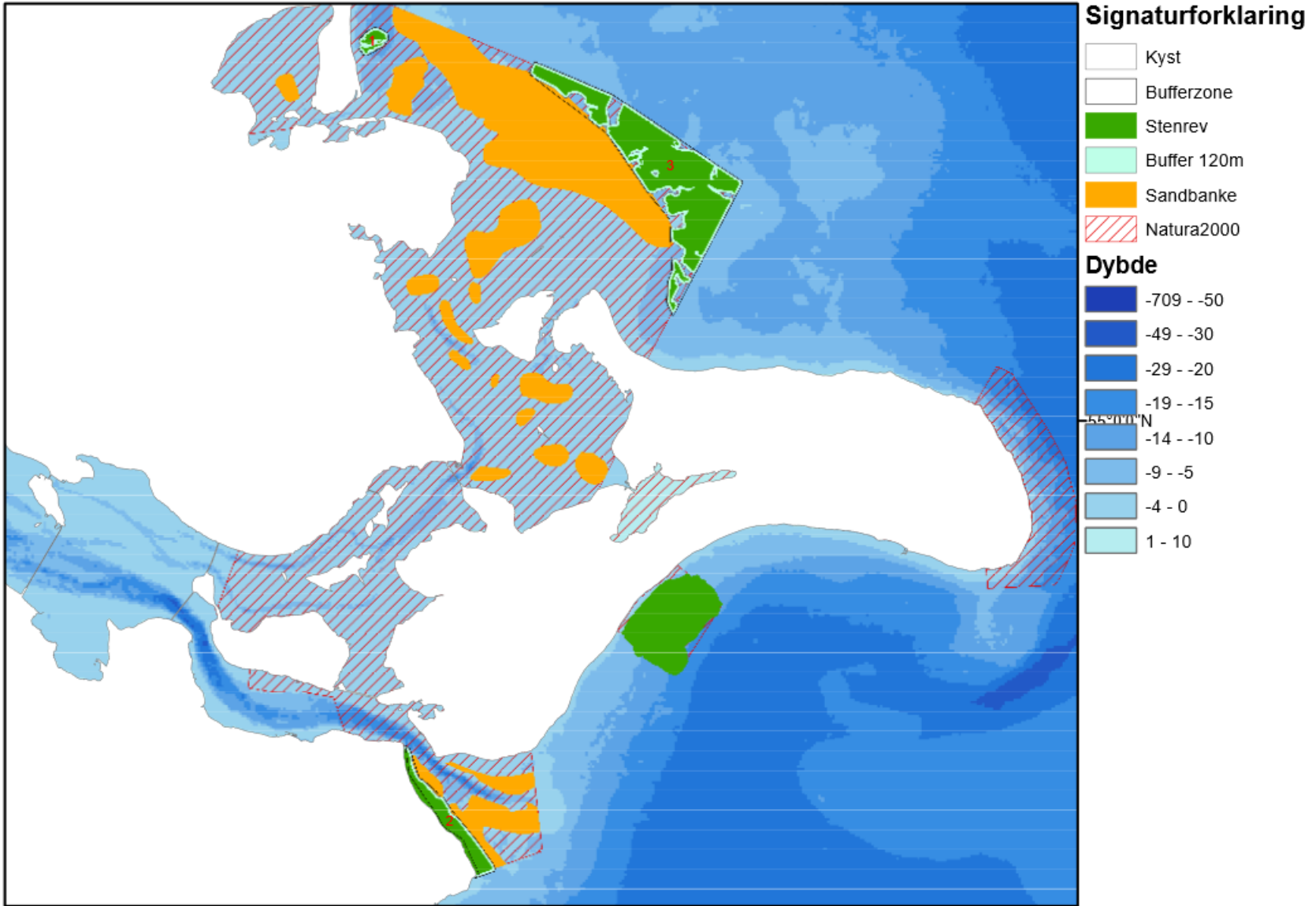


Signaturforklaring

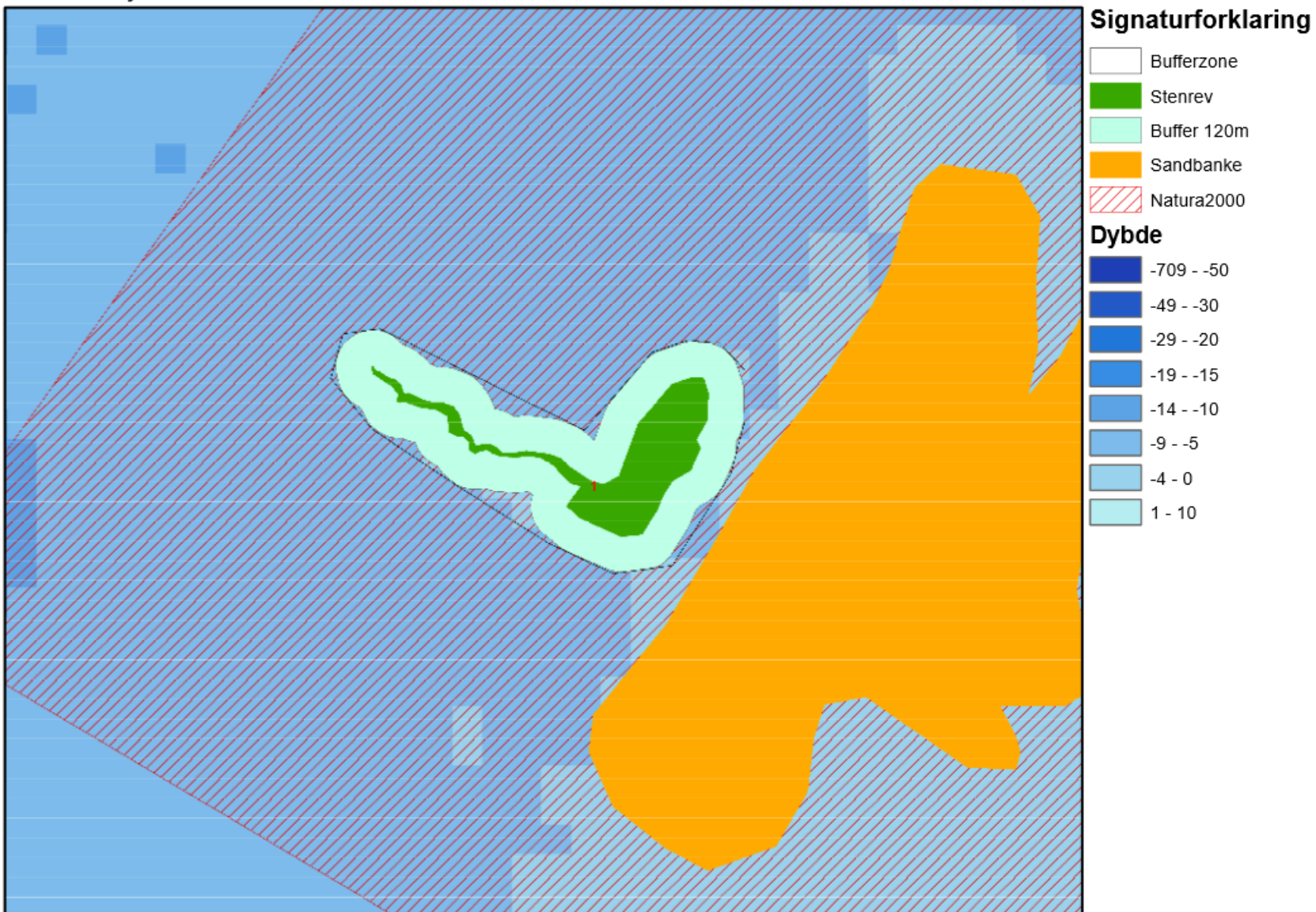
- Kyst
- Bufferzone
- Stenrev
- Buffer 100m
- Sandbanke
- Natura2000

- ### Dybde
- 709 - -50
 - 49 - -30
 - 29 - -20
 - 19 - -15
 - 14 - -10
 - 9 - -5
 - 4 - 0
 - 1 - 10

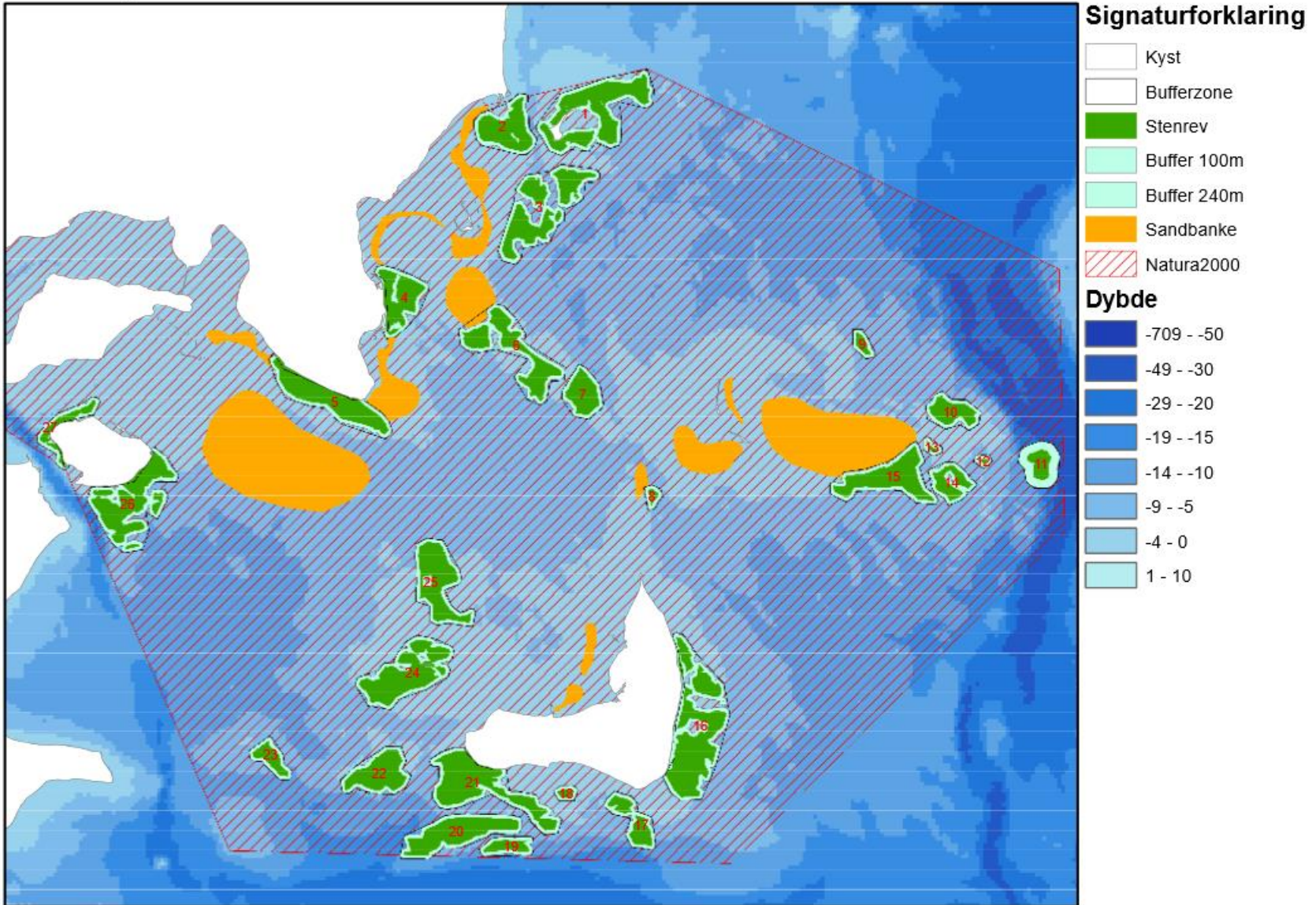
Præstø Fjord



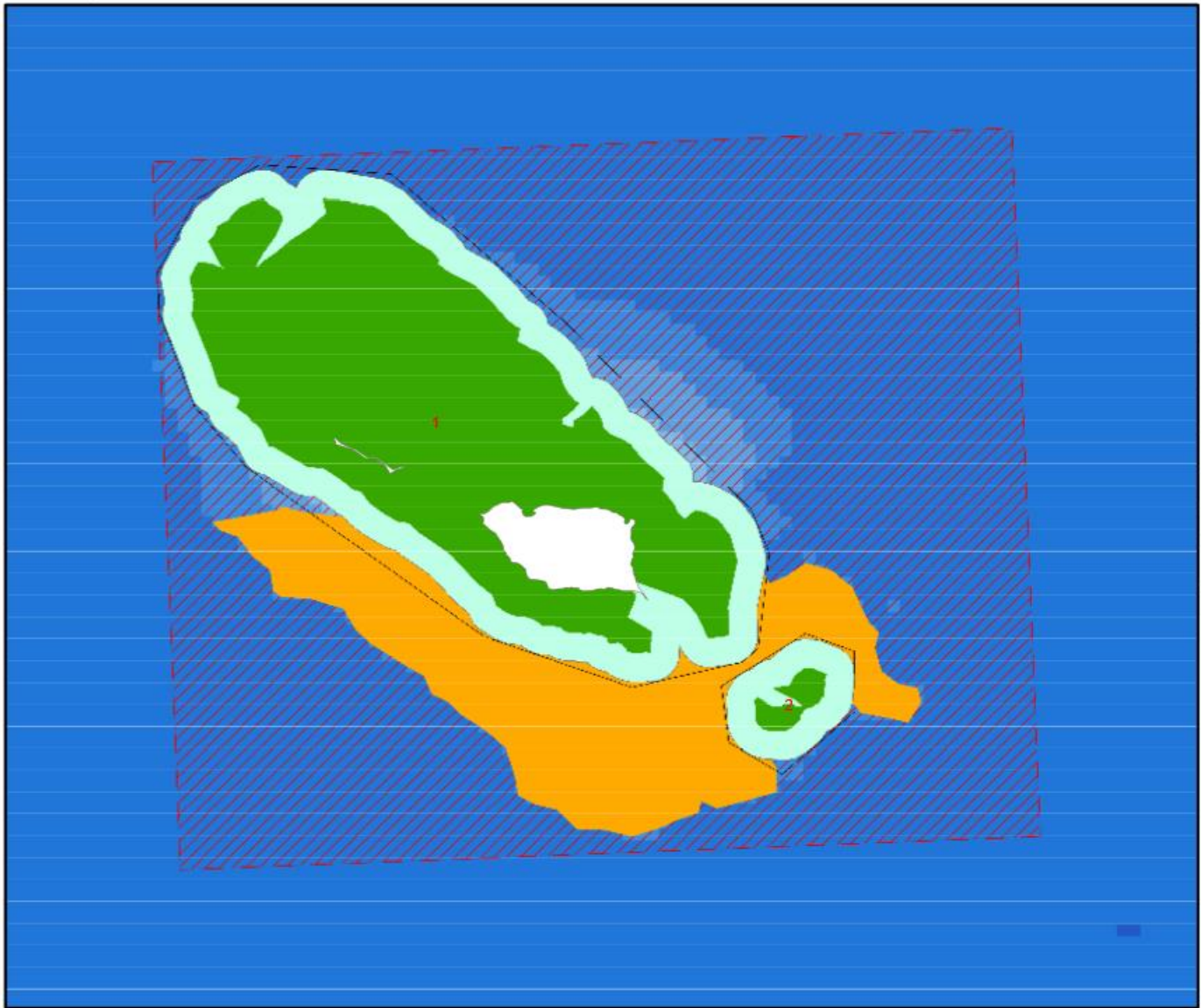
Nakskov Fjord



Horsens Fjord



Hesselø



Signaturforklaring

- Kyst
- Bufferzone
- Stenrev
- Buffer 240m
- Sandbanke
- Natura2000

Dybde

- 709 - -50
- 49 - -30
- 29 - -20
- 19 - -15
- 14 - -10
- 9 - -5
- 4 - 0
- 1 - 10